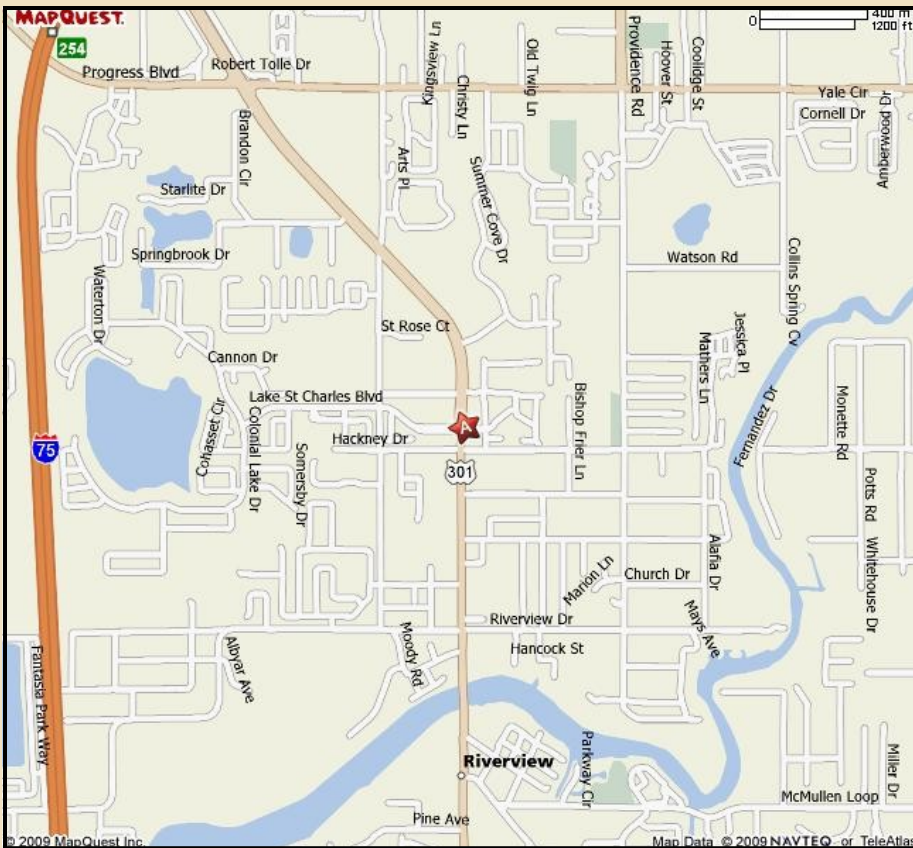


Lake St. Charles - Outparcel

Riverview, Florida 33578



Features

- Prime location at the intersection of US HWY 301 and Lake St. Charles Blvd in Riverview, FL
- Hard Corner adjacent to Sweetbay Grocery Store
- 1.0 acre MOL
- Easy access to I-75 corridor
- Customized construction available

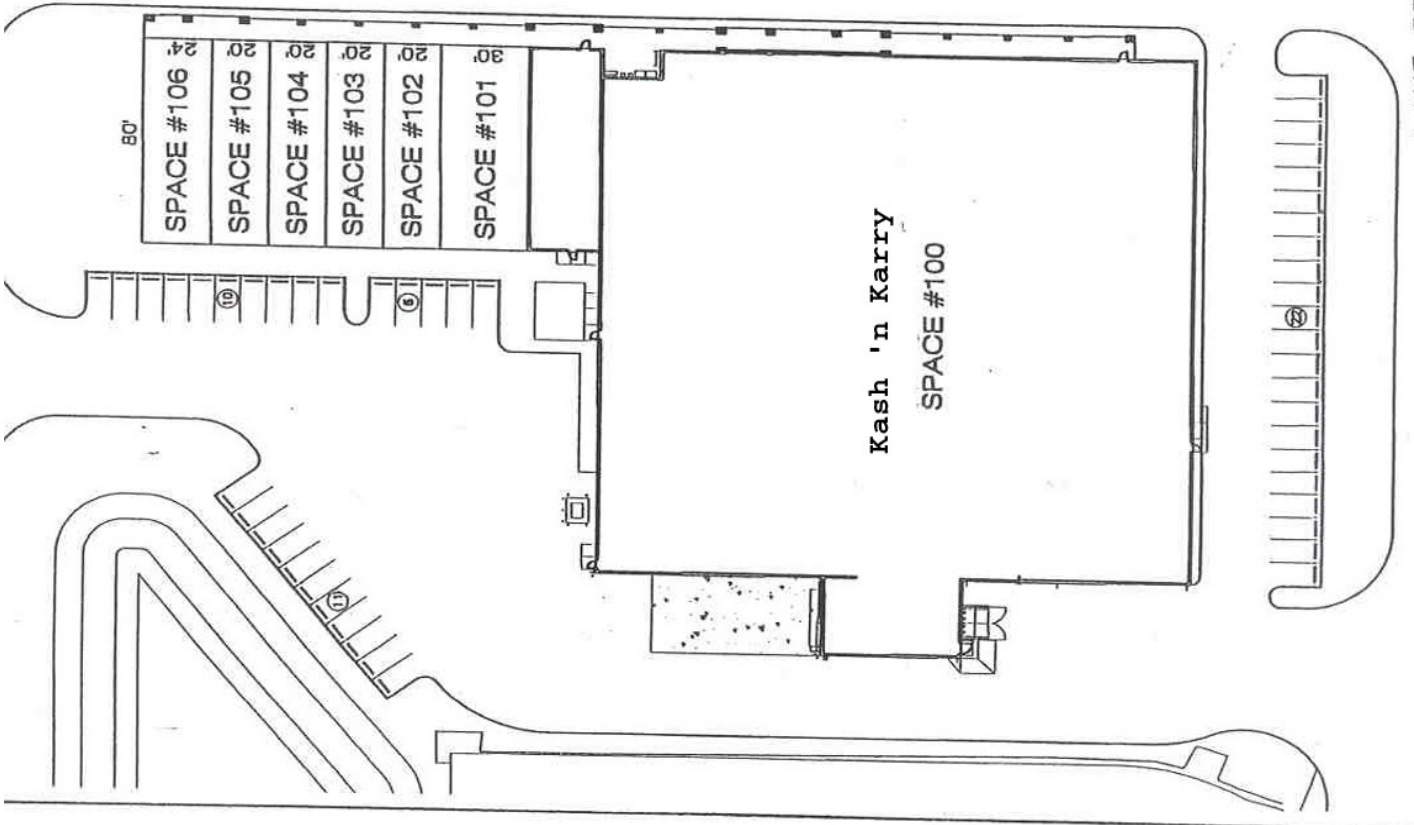
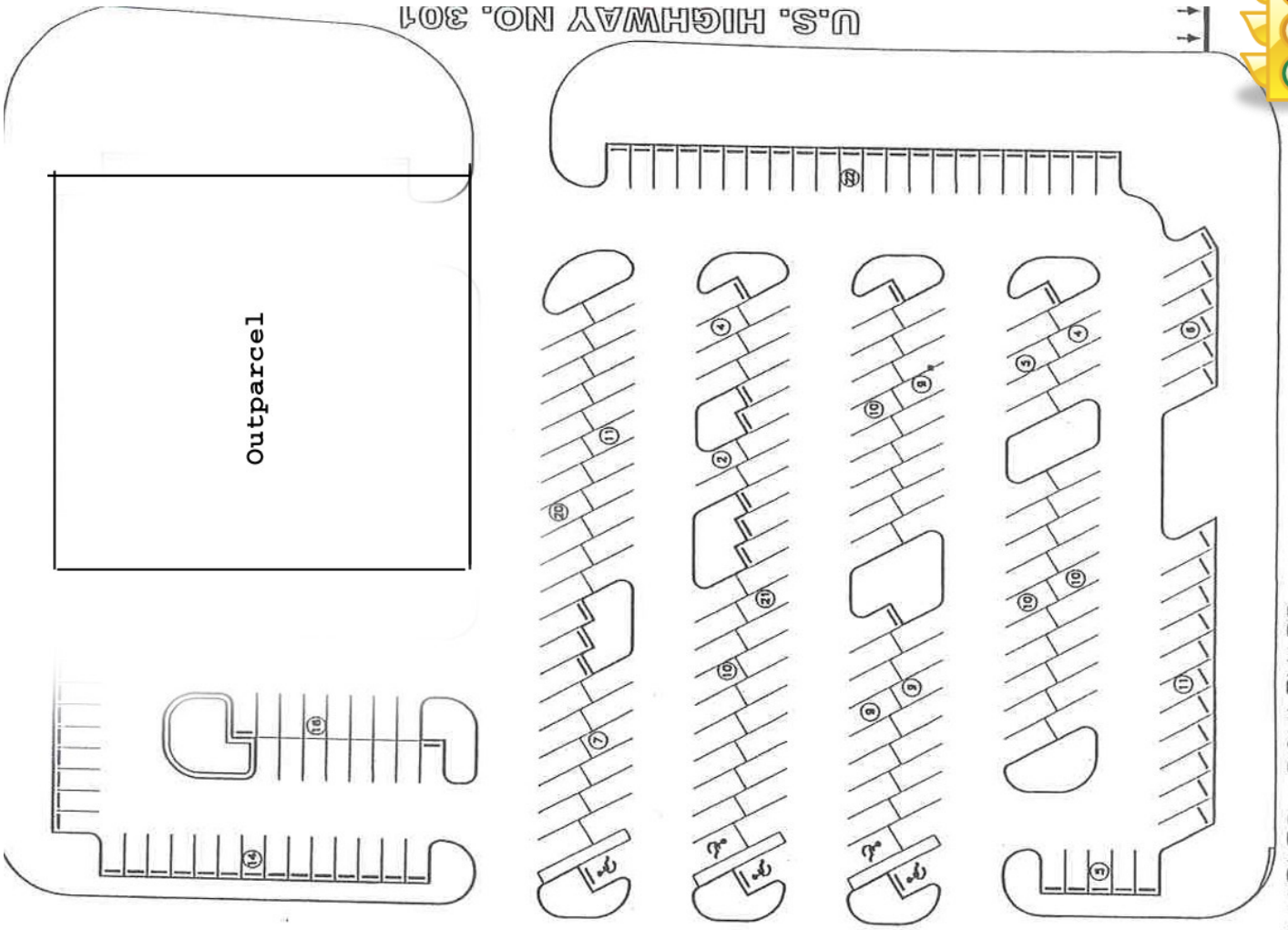
Contact Information

David Scher (727) 460-2185
Office (727) 796-1077

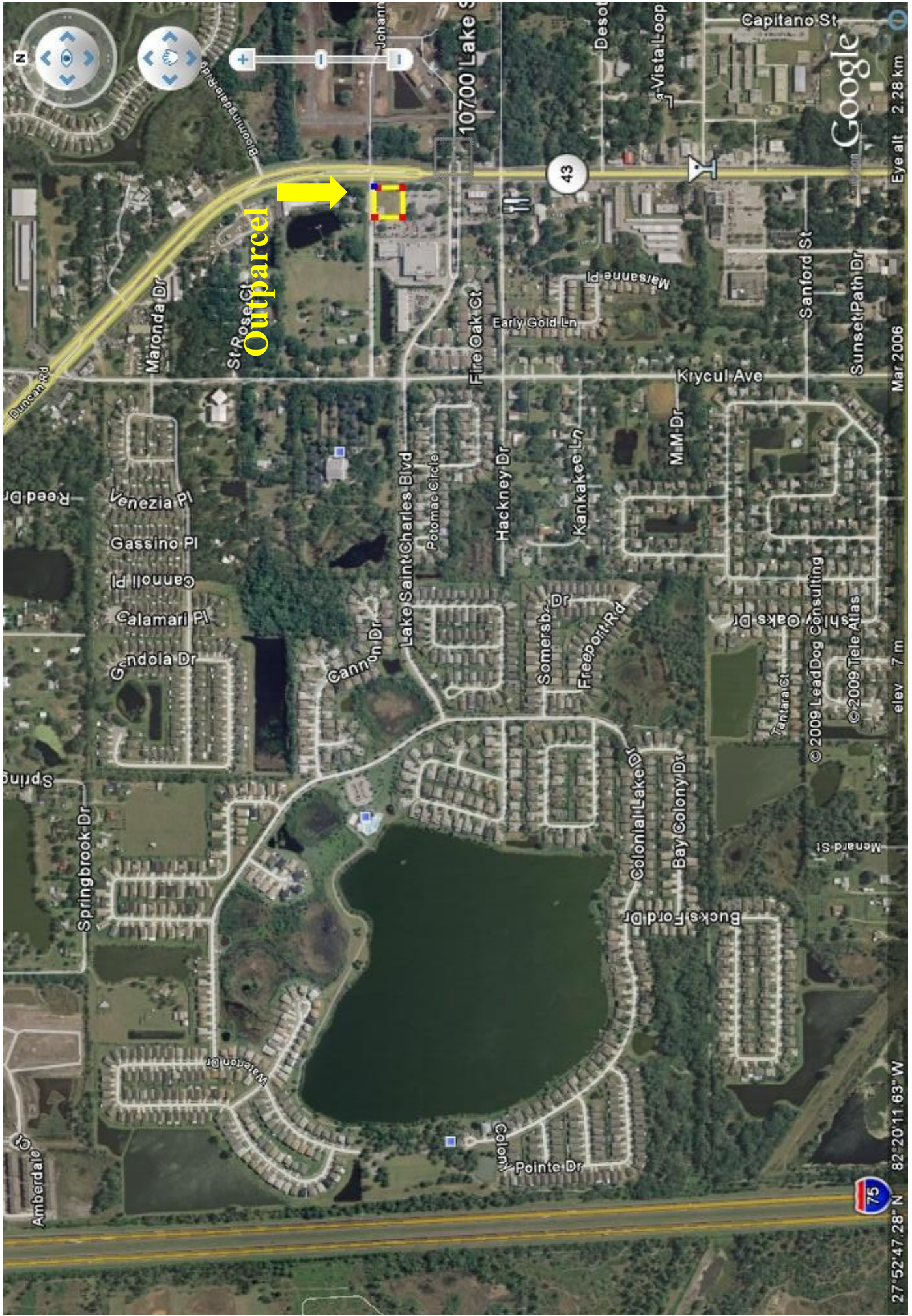
Demographics			
2008	1-Mile	3-Mile	5-Mile
Population	2,339	24,336	66,039
US HWY 301 Traffic Count	35,000 Cars per Day		



U.S. HIGHWAY NO. 301



LAKE ST. CHARLES BOULEVARD
RIGHT-OF-WAY WIDTH VARIES - DIVIDED HIGHWAY



Outparcel

Google

Eye alt 2.28 km

Mar 2006

elev 7 m

© 2009 LeadDog Consulting

© 2009 Tele Atlas

27°52'47.28" N 82°20'11.63" W

