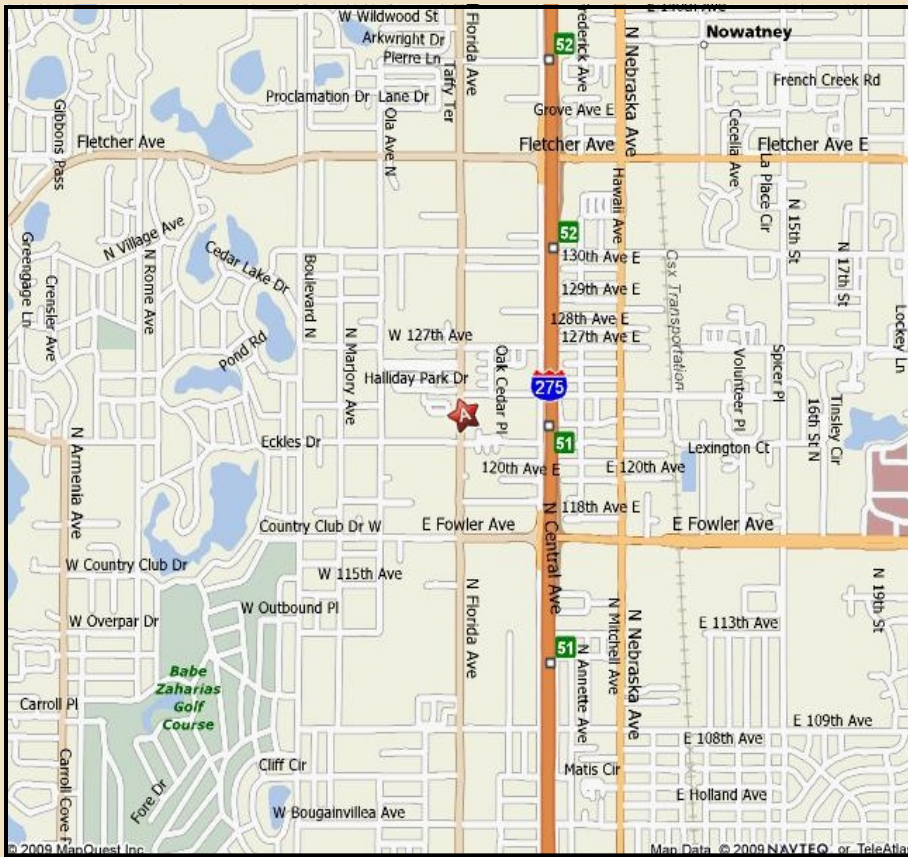
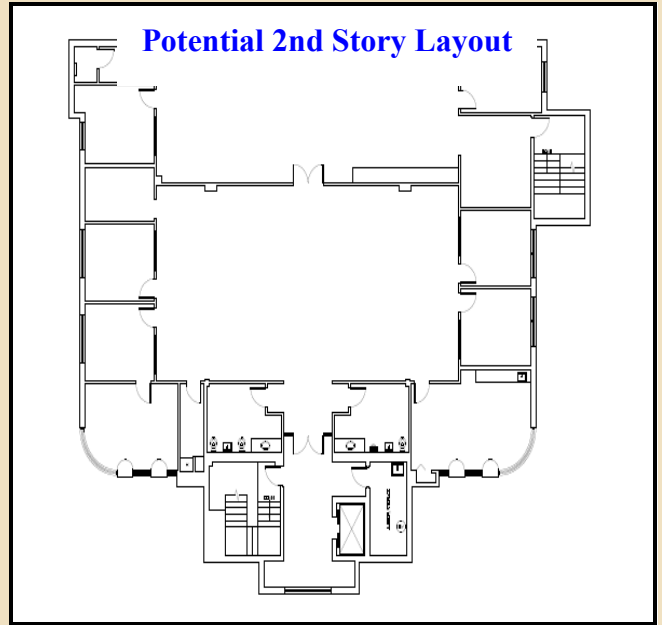


12233 N. Florida Ave - Office

Tampa, Florida 33612



Features

- **Highly visible Class "A" building**
- **Easy access to I-275 on Florida between Fletcher and Fowler**
- **6,000 contiguous sf of professional office space (divisible as needed)**
- **Space can be delivered with a custom build out**
- **Parking space to be expanded to 5-6/1000 spaces**
- **Lighted intersection at N. Florida and 124th St.**

Contact Information

David Scher (727) 460-2185
Office (727) 796-1077

Demographics			
2008	1-Mile	3-Mile	5-Mile
Population	11,867	112,223	286,097
N. Florida Ave Traffic Count	34,500 Cars per Day		

REF #	Square Footage	Width	Depth
1	1,918		
2	1,950		
3	2,132		
Wachovia	6,115		

